

Pomona Valley
Transportation
Authority

A partnership of the cities of Claremont, La Verne, Pomona and San Dimas

2120 Foothill Boulevard ■ Suite 116 ■ La Verne California 91750
phone 909-596-7664 fax 909-596-7399

**AGENDA
ITEM #4**

November 4, 2020

MEMORANDUM

To: Pomona Valley Transportation Authority
From: George L. Sparks, PVTA Administrator
Subject: **Minivan Purchase Recommendation**

Recommendation: *Approve the purchase of four Braun Entervan minivans from Creative Bus Sales.*

Background

PVTA supplies eight (8) minivans to our contractor to increase the availability of accessible vehicles in the demand response fleet. PVTA has established a replacement schedule for these units, six of the vehicles currently exceed our mileage standards. We have recently been awarded \$194,000 to replace four of these units. We need to move forward as soon as possible with the purchase of these vehicles to increase the accessible vehicle capacity of our demand response services. The units will also be used to pilot a new service configuration targeting improving the on-time performance of our One Step programs and other demand response services. PVTA makes use of the California Association for Coordinated Transportation (CalACT) procurement cooperative. The cooperative bid offers pricing for vehicles from multiple manufacturers and vendors. Making use of the CalACT cooperative purchasing agreement saves PVTA the time and cost of administering its own bid for the vehicles. The cooperative bid meets all state and federal procurement requirements.

Purchase Analysis and Recommendations

PVTA currently owns eight (8) Braun Entervans. We are familiar with the product and it meets the needs of the service. There are minivan offers from two vendors on the CalACT bid, A-Z Bus Sales and Creative Bus Sales. PVTA has had positive experiences with both vendors and both are located nearby. PVTA purchases the standard minivan with a lowered rear seat and an in floor pullout wheelchair ramp which improves access for ambulatory riders and is more convenient for drivers. A price analysis of the offers is shown below:

A-Z Bus Sales

Braun Entervan w/ Friedman rear seat & In Floor Ramp	\$49,458.15*
Price for Four	\$197,832.60*

Creative Bus Sales

Braun Entervan w/ Friedman rear seat & In Floor Ramp	\$48,837.50*
Price for Four	\$195,350.00*

*Excludes Sales Tax & CalACT procurement fees.

Based on the results of the price analysis, staff recommends the purchase of four Braun Entervan accessible minivans from Creative Bus Sales for a total cost of \$52,722.54 per vehicle including applicable taxes and fees. The total cost for four units is \$210,980.16. A copy of the proposal from Creative Bus Sales is attached.



10/9/2020

***Class D Braun Entervan Proposal for
Pomona Valley Transportation Authority
With Infloor Slide Out Ramp***



*Van photo not to exact specifications.

PUBLIC AGENCY - MBTA/CalACT Purchasing Cooperative

The Vehicle(s) To Be Provided In Accordance With Request for Proposals MBTA/CalACT RFP #15-03. The Following Changes Are Incorporated For The Vehicle(s) Provided To Pomona Valley Transportation Authority.

Dodge Grand Caravan Chassis: ADA Compliant, CARB Approved, Manual Simple Stow In Floor Ramp, Q'Straint Tiedowns, Interlock, OEM 20 Gallon Fuel Tank, Full Size Spare, Roll Out Co-Pilot Seat, Rear Storage Area, Rear Lowered Freedman Bench Seat, and Foldaway Double Seat. Vehicles to be white with no decals.

Base Vehicle Price		\$46,172.50
Lowered Freedman Bench Seat		\$1,100.00
Braun Infloor Manual Ramp		\$1,480.00
Doc Fee		\$85.00
Subtotal		\$48,837.50
Non Taxable ADA Equipment	\$18,459.60	
Sales Tax	10.25%	\$3,113.73
CalACT Fee		\$732.56
DMV Filing Fee		\$30.00
DMV Registration Fee	IF EXEMPT	\$0.00
CA Tire Fee		\$8.75
Total Cost Per Vehicle		\$52,722.54
Total Cost For 4-Vehicles		\$210,890.16



Creative Bus Sales

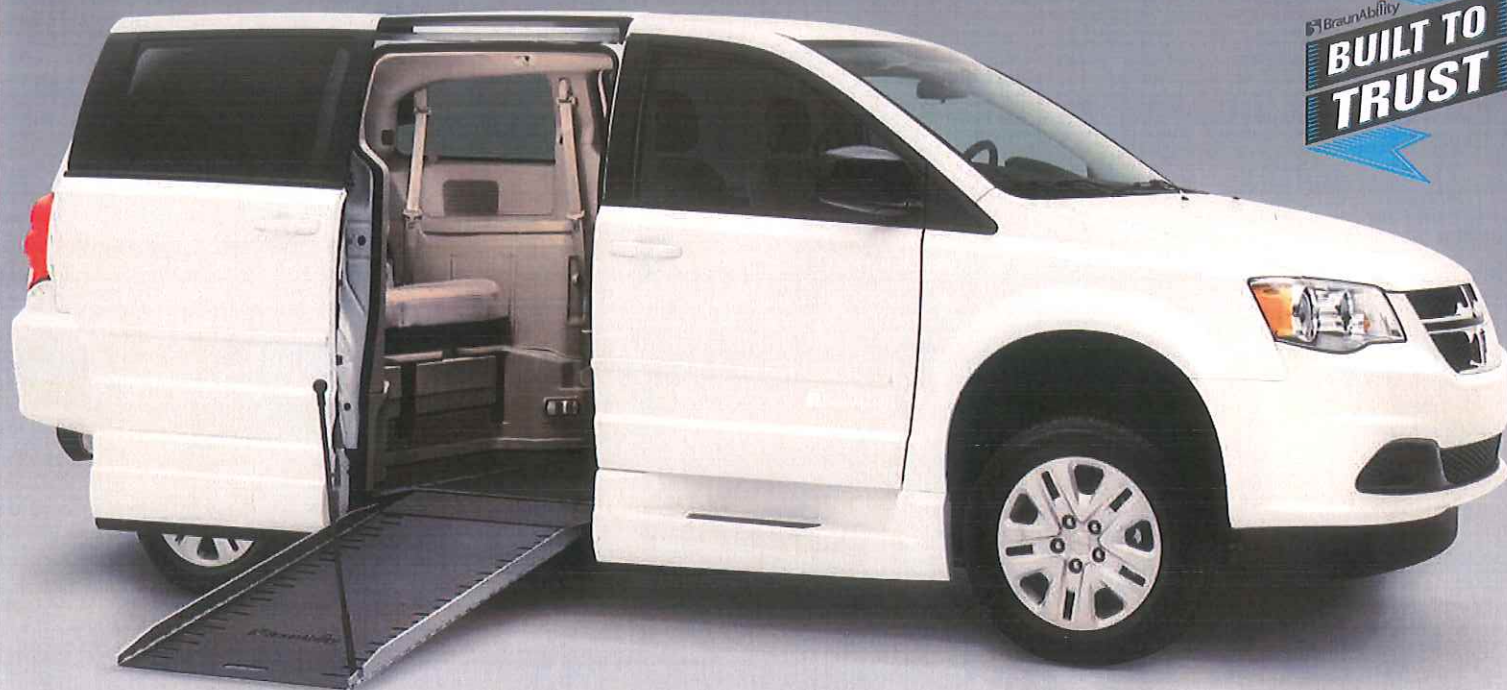
Creative Bus Sales will invoice, collect, and remit this fee to CalACT. In addition, if the Agency is not a current member of CalACT you must become a member to utilize this procurement. Please contact Jacklyn Montgomery to be approved for purchasing of this contract and to become a member if required.

CalACT / 916-920-8018 / jacklyn@calact.org

Steve Chung

Cell 909.549.9398

stevec@creativebussales.com



All-New BraunAbility® Dodge Simple Stow™ Infloor



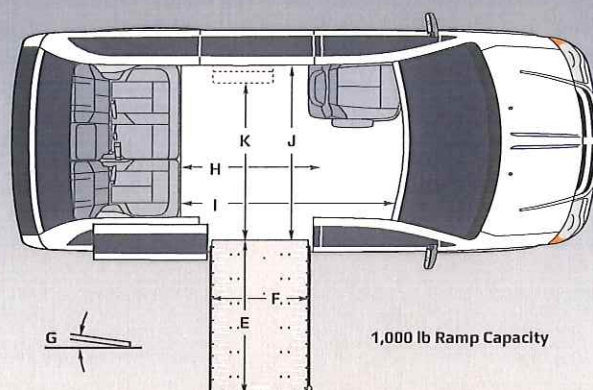
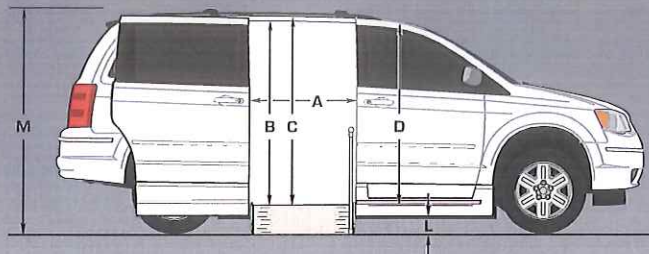
- ADA Compliant
- FMVSS Compliant
- CMVSS Compliant
- Buy America Compliant
- CARB Approved

The all-new Dodge Simple Stow™ Infloor is a cost-effective, ADA compliant conversion that allows operators to easily and safely accommodate both wheelchair and ambulatory passengers. This application features a manual infloor ramp with a stow/deploy handle for easy operation.



Dodge Simple Stow™ Infloor

- ADA Compliant
- FMVSS Compliant
- CMVSS Compliant
- Buy America Compliant
- CARB Approved
- 56.25" door opening height
- All-new manual infloor ramp with stow/deploy aid
- 30" ramp width (31.625" wide with stow/deploy aid removed)
- 1,000 lb ramp capacity
- Automatic fold up/down sideplates
- Optional 2nd row 2-passenger foldaway seat
- 5" loaded ground clearance



1,000 lb Ramp Capacity

A	Door Opening Usable Width (Slide Door)	31.5"
B	Door Opening Usable Height (Slide Door)	56.25"
C	Interior Height at Center of Van*	61"
D	Interior Height at Driver and Passenger Position*	60"
E	Ramp Length	52"
F	Ramp Width (Usable Clear Opening)	30"
G	Ramp Angle - Manual (Unloaded)	12.5°
H	Interior Floor Length (Behind Front Seats)	57"
I	Overall Interior Floor Length (Flat Area)	87"
J	Interior Width at B-Pillars	62"
K	Width - Ramp to Optional 2-Pass. Seat (Folded)	49.75"
L	¹ Ground Clearance (Unloaded) - ² Loaded @ 1200 lbs	¹ 6.25" ² 5"
M	Overall Vehicle Height (Unloaded)	75"

Due to manufacturing tolerances both with the OEM vehicle and the conversion components, all dimensions may vary slightly from those shown.

* Deduct 3" off of Interior Height for Applications with Overhead DVD/Rear Heat & AC/Rail System

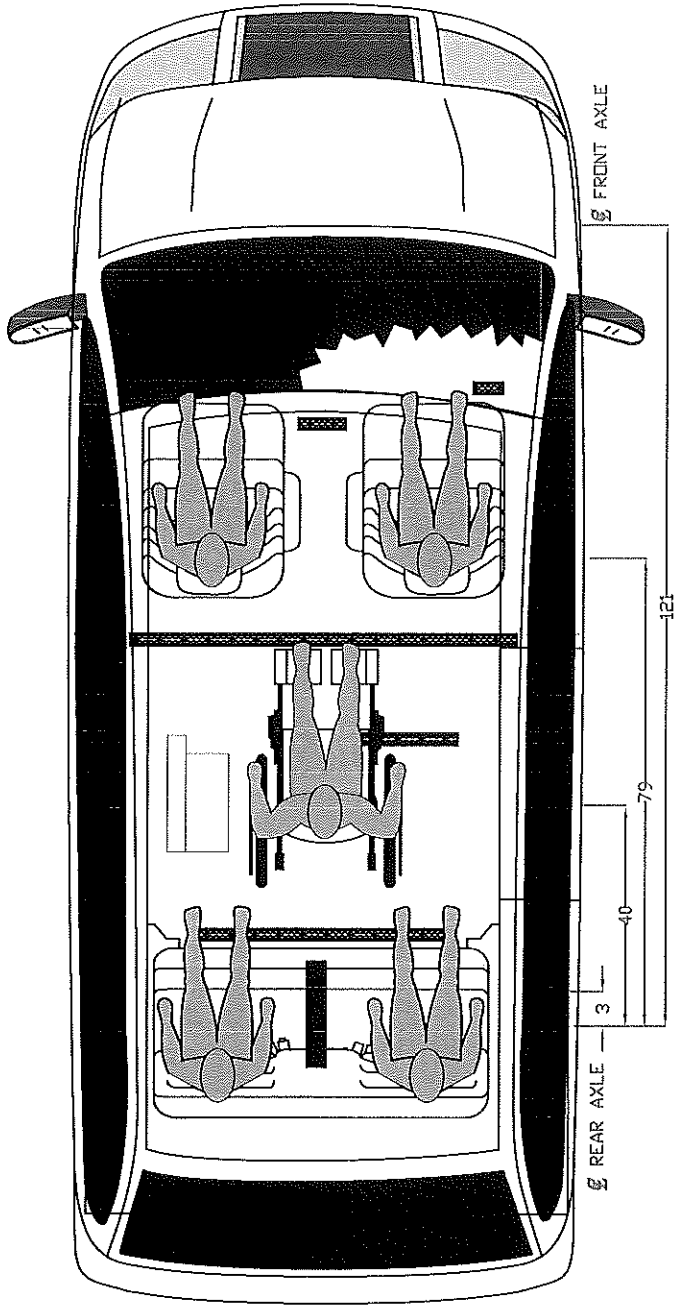
4 ManeuverAbility

- FIT - Plenty of wide-open interior space to maneuver the biggest chairs comfortably
- WIDTH - Widest doorway and ramp that allows you to enter and exit with confidence
- RIGIDITY - The strongest ramps with low flex so you can enter with ease
- LENGTH - A shorter ramp means greater flexibility - park your vehicle when and where you need it!



800.488.0359 | braunability.com/commercial

SEATING OPTION I: (4) AMBULATORY PASSENGERS, (1) MOBILITY AID PASSENGER, AND THE DRIVER

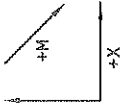


NOTES / DEFINED VARIABLES

ALLOWABLE WEIGHTS
DEM GVWR = 6050#
DEM FRONT GAWR = 2950#
DEM REAR GAWR = 3100#
MODIFIED EMPTY WEIGHTS (INCLUDES 2ND ROW FLIP SEAT)
TOTAL VEHICLE = 4970#
FRONT AXLE = 2569#
REAR AXLE = 2401#
WHEEL BASE = 121'
AMBULATORY PASSENGER = 150#
MOBILITY AID PASSENGER = 250#
REMOVABLE FRONT PASSENGER SEAT = 100#
NOTE: THESE ARE APPROXIMATE WEIGHTS ONLY.
(ACTUAL WEIGHTS MAY VARY WITH VEHICLE.)

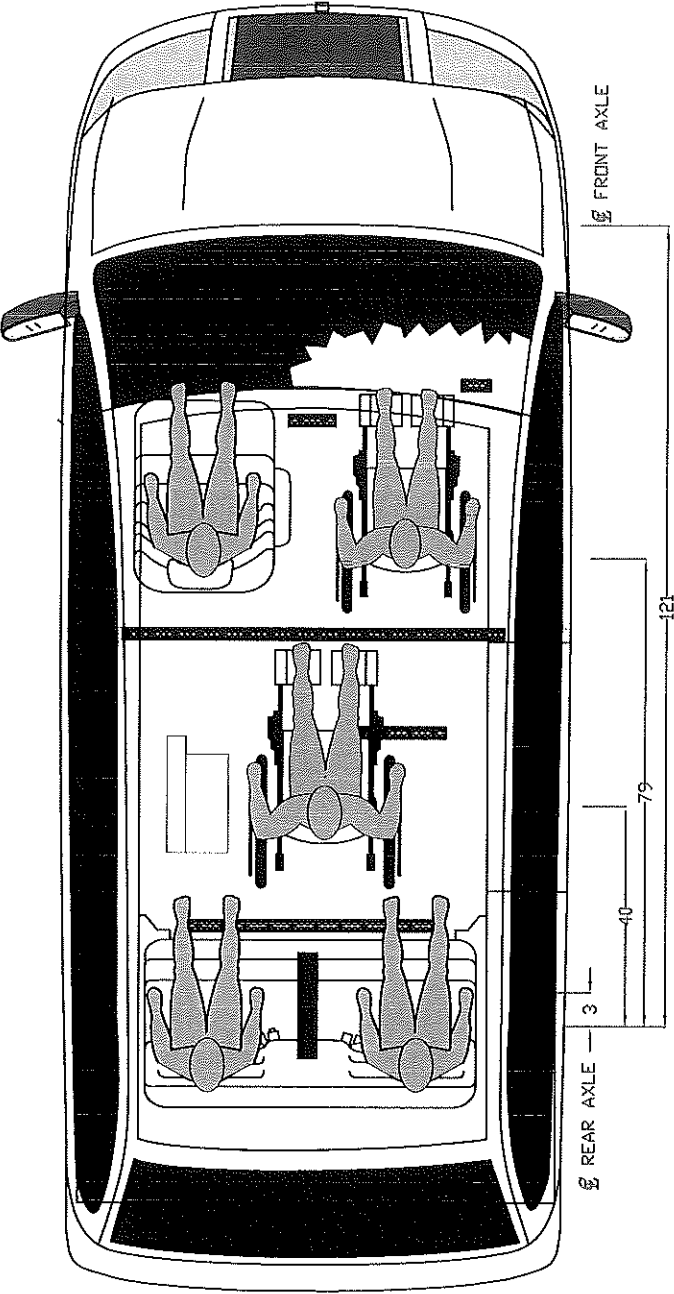
LOADED WEIGHT CALCULATIONS

$\Sigma M_{CLP} = 0$
 $300(3) + 300(79) + 250(40) + 2569(121) - F_{FR}(121) = 0$
 $F_{FR} = 2855\#$
 $\Sigma F_y = 0$
 $150(4) + 250(1) + 2401 + 2569 - 2855 - F_{FR} = 0$
 $F_{FR} = 2965$
REQUIRED CAPACITIES
LOADED GVW = 5820#
LOADED GAW FRONT = 2855#
LOADED GAW REAR = 2965#



--	--	--	--	--	--	--	--	--	--	--	--	--	--	--	--	--	--	--	--	--	--	--	--	--	--	--	--	--	--	--	--	--	--	--	--	--	--	--	--	--	--	--	--	--	--	--	--	--	--	--	--	--	--	--	--	--	--	--	--	--	--	--	--	--	--	--	--	--	--	--	--	--	--	--	--	--	--	--	--	--	--	--	--	--	--	--	--	--	--	--	--	--	--	--	--	--	--	--	--	--	--	--	--	--	--	--	--	--	--	--	--	--	--	--	--	--	--	--	--	--	--	--	--	--	--	--	--	--	--	--	--	--	--	--	--	--	--	--	--	--	--	--	--	--	--	--	--	--	--	--	--	--	--	--	--	--	--	--	--	--	--	--	--	--	--	--	--	--	--	--	--	--	--	--	--	--	--	--	--	--	--	--	--	--	--	--	--	--	--	--	--	--	--	--	--	--	--	--	--	--	--	--	--	--	--	--	--	--	--	--	--	--	--	--	--	--	--	--	--	--	--	--	--	--	--	--	--	--	--	--	--	--	--	--	--	--	--	--	--	--	--	--	--	--	--	--	--	--	--	--	--	--	--	--	--	--	--	--	--	--	--	--	--	--	--	--	--	--	--	--	--	--	--	--	--	--	--	--	--	--	--	--	--	--	--	--	--	--	--	--	--	--	--	--	--	--	--	--	--	--	--	--	--	--	--	--	--	--	--	--	--	--	--	--	--	--	--	--	--	--	--	--	--	--	--	--	--	--	--	--	--	--	--	--	--	--	--	--	--	--	--	--	--	--	--	--	--	--	--	--	--	--	--	--	--	--	--	--	--	--	--	--	--	--	--	--	--	--	--	--	--	--	--	--	--	--	--	--	--	--	--	--	--	--	--	--	--	--	--	--	--	--	--	--	--	--	--	--	--	--	--	--	--	--	--	--	--	--	--	--	--	--	--	--	--	--	--	--	--	--	--	--	--	--	--	--	--	--	--	--	--	--	--	--	--	--	--	--	--	--	--	--	--	--	--	--	--	--	--	--	--	--	--	--	--	--	--	--	--	--	--	--	--	--	--	--	--	--	--	--	--	--	--	--	--	--	--	--	--	--	--	--	--	--	--	--	--	--	--	--	--	--	--	--	--	--	--	--	--	--	--	--	--	--	--	--	--	--	--	--	--	--	--	--	--	--	--	--	--	--	--	--	--	--	--	--	--	--	--	--	--	--	--	--	--	--	--	--	--	--	--	--	--	--	--	--	--	--	--	--	--	--	--	--	--	--	--	--	--	--	--	--	--	--	--	--	--	--	--	--	--	--	--	--	--	--	--	--	--	--	--	--	--	--	--	--	--	--	--	--	--	--	--	--	--	--	--	--	--	--	--	--	--	--	--	--	--	--	--	--	--	--	--	--	--	--	--	--	--	--	--	--	--	--	--	--	--	--	--	--	--	--	--	--	--	--	--	--	--	--	--	--	--	--	--	--	--	--	--	--	--	--	--	--	--	--	--	--	--	--	--	--	--	--	--	--	--	--	--	--	--	--	--	--	--	--	--	--	--	--	--	--	--	--	--	--	--	--	--	--	--	--	--	--	--	--	--	--	--	--	--	--	--	--	--	--	--	--	--	--	--	--	--	--	--	--	--	--	--	--	--	--	--	--	--	--	--	--	--	--	--	--	--	--	--	--	--	--	--	--	--	--	--	--	--	--	--	--	--	--	--	--	--	--	--	--	--	--	--	--	--	--	--	--	--	--	--	--	--	--	--	--	--	--	--	--	--	--	--	--	--	--	--	--	--	--	--	--	--	--	--	--	--	--	--	--	--	--	--	--	--	--	--	--	--	--	--	--	--	--	--	--	--	--	--	--	--	--	--	--	--	--	--	--	--	--	--	--	--	--	--	--	--	--	--	--	--	--	--	--	--	--	--	--	--	--	--	--	--	--	--	--	--	--	--	--	--	--	--	--	--	--	--	--	--	--	--	--	--	--	--	--	--	--	--	--	--	--	--	--	--	--	--	--	--	--	--	--	--	--	--	--	--	--	--	--	--	--	--	--	--	--	--	--	--	--	--	--	--	--	--	--	--	--	--	--	--	--	--	--	--	--	--	--	--	--	--	--	--	--	--	--	--	--	--	--	--	--	--	--	--	--	--	--	--	--	--	--	--	--	--	--	--	--	--	--	--	--	--	--	--	--	--	--	--	--	--	--	--	--	--	--	--	--	--	--	--	--	--	--	--	--	--	--	--	--	--	--	--	--	--	--	--	--	--	--	--	--	--	--	--	--	--	--	--	--	--	--	--	--	--	--	--	--	--	--	--	--	--	--	--	--	--	--	--	--	--	--	--	--	--	--	--	--	--	--	--	--	--	--	--	--	--	--	--	--	--	--	--	--	--	--	--	--	--	--	--	--	--	--	--	--	--	--	--	--	--	--	--	--	--	--	--	--	--	--	--	--	--	--	--	--	--	--	--	--	--	--	--	--	--	--	--	--	--	--	--	--	--	--	--	--	--	--	--	--	--	--	--	--	--	--	--	--	--	--	--	--	--	--	--	--	--	--	--	--	--	--	--	--	--	--	--	--	--	--	--	--	--	--	--	--	--	--	--	--	--	--	--	--	--	--	--	--	--	--	--	--	--	--	--	--	--	--	--	--	--	--	--	--	--	--	--	--	--	--	--	--	--	--	--	--	--	--	--	--	--	--	--	--	--	--	--	--	--	--	--	--	--	--	--	--	--	--	--	--	--	--	--	--	--	--	--	--	--	--	--	--	--	--	--	--	--	--	--	--	--	--	--	--	--	--	--	--	--	--	--	--	--	--	--	--	--	--	--	--	--	--	--	--	--	--	--	--	--	--	--	--	--	--	--	--	--	--	--	--	--	--	--	--	--	--	--	--	--	--	--	--	--	--	--	--	--	--	--	--	--	--	--	--	--	--	--	--	--	--	--	--	--	--	--	--	--	--	--	--	--	--	--	--	--	--	--	--	--	--	--	--	--	--	--	--	--	--	--	--	--	--	--	--	--	--	--	--	--	--	--	--	--	--	--	--	--	--	--	--	--	--	--	--	--	--	--	--	--	--	--	--	--	--	--	--	--	--	--	--	--	--	--	--	--	--	--	--	--	--	--	--	--	--	--	--	--	--	--	--	--	--	--	--	--	--	--	--	--	--	--	--	--	--	--	--	--	--	--	--	--	--	--	--	--	--	--	--	--	--	--	--	--	--	--	--	--	--	--	--	--	--	--	--	--	--	--	--	--	--	--	--	--	--	--	--	--	--	--	--	--	--	--	--	--	--	--	--	--	--	--	--	--	--	--	--	--	--	--	--	--	--	--	--	--	--	--	--	--	--	--	--	--	--	--	--	--	--	--	--	--	--	--	--	--	--	--	--	--	--	--	--	--	--	--	--	--	--	--	--	--	--	--	--	--	--	--	--	--	--	--	--	--	--	--	--	--	--	--	--	--	--	--	--	--	--	--	--	--	--	--	--	--	--	--	--	--	--	--	--	--	--	--	--	--	--	--	--	--	--	--	--	--	--	--	--	--	--	--	--	--	--	--	--	--	--	--	--	--	--	--	--	--	--	--	--	--	--	--	--	--	--	--	--	--	--	--	--	--	--	--

SEATING OPTION J: (3) AMBULATORY PASSENGERS, (2) MOBILITY AID PASSENGERS, AND THE DRIVER



NOTES / DEFINED VARIABLES

ALLOWABLE WEIGHTS
DEM GVWR = 6050#
DEM FRONT GAWR = 2950#
DEM REAR GAWR = 3100#

MODIFIED EMPTY WEIGHTS (INCLUDES 2ND ROW FLIP SEAT)
TOTAL VEHICLE = 4970#
FRONT AXLE = 2569#
REAR AXLE = 2401#

WHEEL BASE = 121'
AMBULATORY PASSENGER = 150#
MOBILITY AID PASSENGER = 250#
REMOVABLE FRONT PASSENGER SEAT = 100#

NOTE: THESE ARE APPROXIMATE WEIGHTS ONLY.
ACTUAL WEIGHTS MAY VARY WITH VEHICLE.

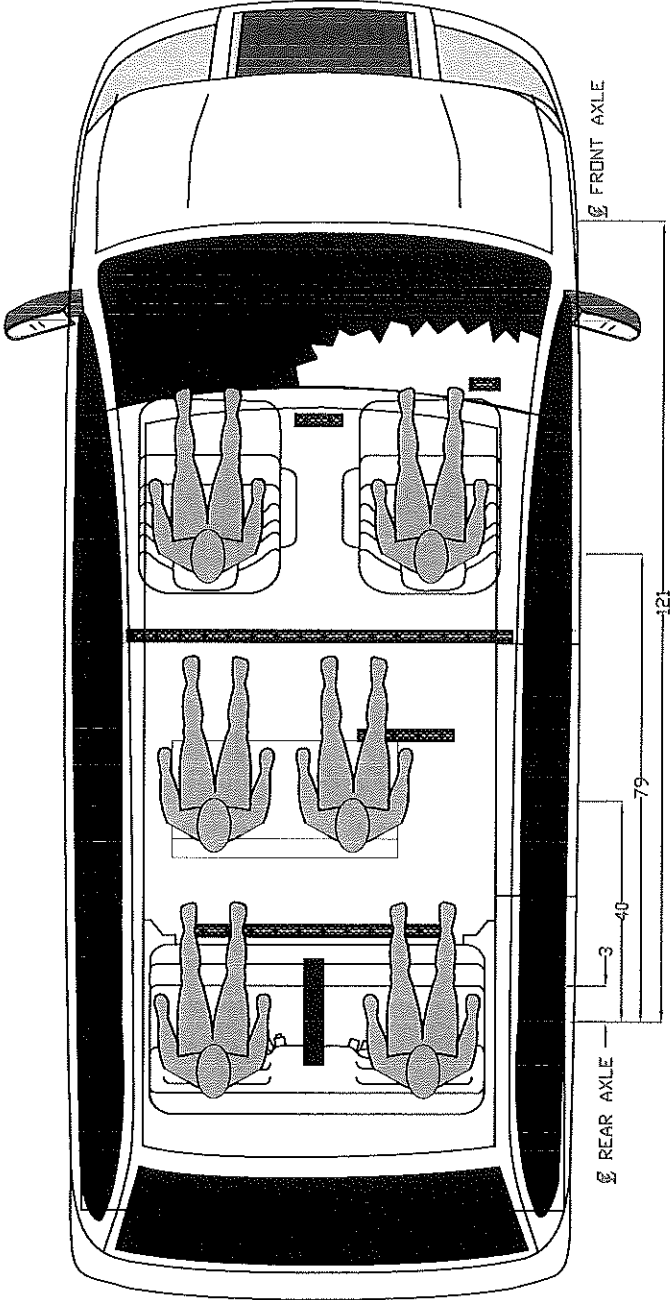
LOADED WEIGHT CALCULATIONS

$\Sigma M_{CLR} = 0$
 $300(3) + 150(79) + (250-100)(79) + 250(40) + 2569(121) - F_{FR}(121) - F_{RR}(121) = 0$
 $F_{FR} = 2855\#$
 $\Sigma F_Y = 0$
 $150(3) + 250(1) + (250-100)(1) + 2401 + 2569 - 2855 - F_{RR} = 0$
 $F_{RR} = 2965$

REQUIRED CAPACITIES
LOADED GVW = 5820#
LOADED GAW FRONT = 2855#
LOADED GAW REAR = 2965#

TOLERANCES: (UNLESS OTHERWISE SPECIFIED) DECIMAL DIMENSIONS .XX = ±.010 .XX = ±.030 .X = ±.060 FRACTIONAL DIMENSIONS = 1/32 ANGULAR DIMENSIONS = 1° NOTE: REPAIR ALL SHARP CORNERS				CONFIDENTIAL PROPRIETARY INFORMATION DO NOT COPY WITHOUT PERMISSION OF <i>The Braun Corporation</i> <i>Winamac, Indiana 46996</i>			
DESIGN/APPR. CCW				BRAUN 2015 CHRYSLER ADA CALTRANS BID			
DRAWN MDL				P/N			
DETAIL CHK.				500191 SEATING OPTION J			
SCALE 1"=32"				DATE			
DATE				REV. BY			
ECN NO.				REVISION			
REQ. BY				LET.			

SEATING OPTION K: (6) AMBULATORY PASSENGERS AND THE DRIVER

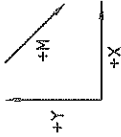


LOADED WEIGHT CALCULATIONS

$\Sigma M_{CLR} = 0$
 $300(3) + 300(79+40) + 2569(121) - F_{FR}(121) = 0$
 $F_{FR} = 2872\#$
 $\Sigma F_Y = 0$
 $150(6) + 2401 + 2569 - 2872 - F_{FR} = 0$
 $F_{FR} = 2998$
REQUIRED CAPACITIES:
LOADED GVW = 5870#
LOADED GAW FRONT = 2872#
LOADED GAW REAR = 2998#

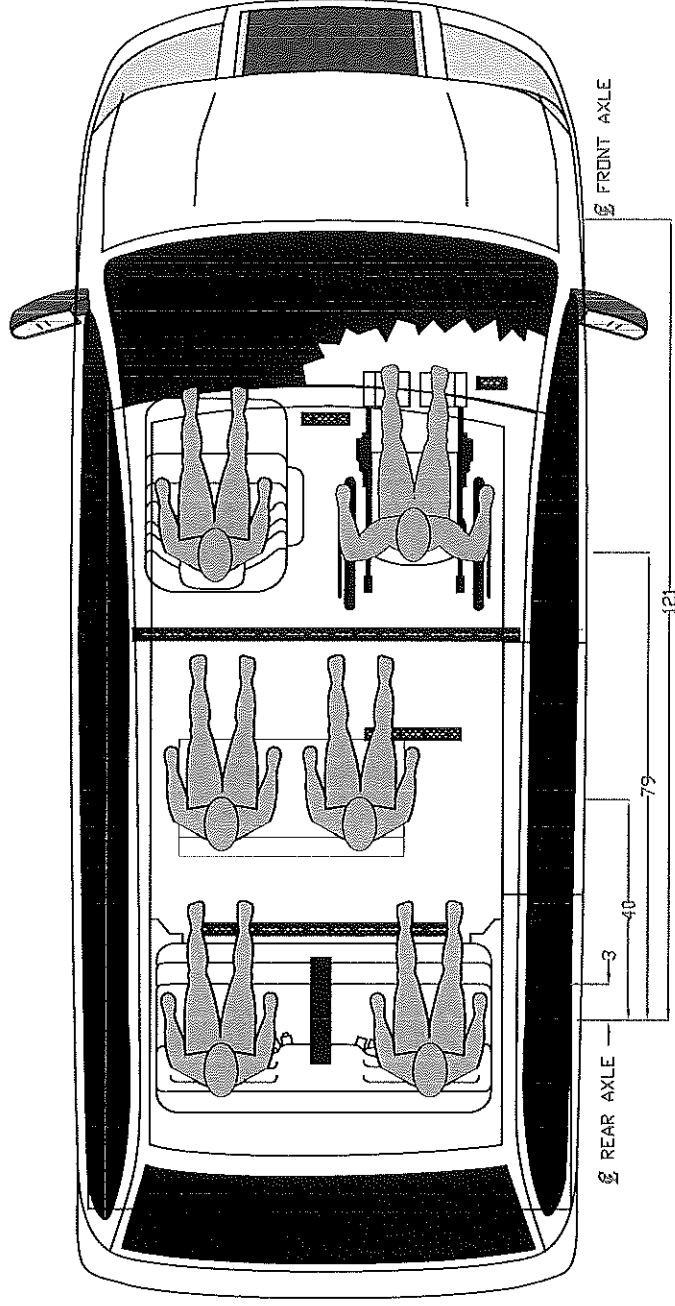
NOTES / DEFINED VARIABLES

ALLOWABLE WEIGHTS:
DEM GVWR = 6050#
DEM FRONT GAWR = 2950#
DEM REAR GAWR = 3100#
MODIFIED EMPTY WEIGHTS (INCLUDES 2ND ROW FLIP SEAT):
TOTAL VEHICLE = 4970#
FRONT AXLE = 2569#
REAR AXLE = 2401#
WHEEL BASE = 121'
AMBULATORY PASSENGER = 150#
MOBILITY AID PASSENGER = 250#
REMOVABLE FRONT PASSENGER SEAT = 100#
NOTE: THESE ARE APPROXIMATE WEIGHTS ONLY.
(ACTUAL WEIGHTS MAY VARY WITH VEHICLE.)



TOLERANCES: UNLESS OTHERWISE SPECIFIED DECIMAL DIMENSIONS: .XXX = ±.010 .XX = ±.030 .X = ±.060 FRACTIONAL DIMENSIONS = 1/32 ANGULAR DIMENSIONS = 1° NOTE: REAR ALL SHARP CORNERS				CONFIDENTIAL PROPRIETARY INFORMATION DO NOT COPY WITHOUT PERMISSION OF <i>The Braun Corporation</i> <i>Winamac, Indiana 46996</i>			
DESIGN/APPR. CCV		SCALE 1"=32"		BRAUN 2015 CHRYSLER - ADA CALTRANS BID			
DRAWN MDL		DETAIL CHK.		P/N			
				DATE			
				REV. BY			
				EDN NO.			
				REVISION			
				LET.			
				500191 SEATING OPTION K			

SEATING OPTION L: (5) AMBULATORY PASSENGERS, (1) MOBILITY AID PASSENGER, AND THE DRIVER



NOTES / DEFINED VARIABLES

ALLOWABLE WEIGHTS

DEM GVR = 6050#

DEM FRONT GAWR = 2950#

DEM REAR GAWR = 3100#

MODIFIED EMPTY WEIGHTS INCLUDES AND ROW FLIP SEATS

TOTAL VEHICLE = 4970#

FRONT AXLE = 2569##

REAR AXLE = 2401 lb

WHEEL BASE = 121"

WHITE DMSE - ICI
AMBULATORY PASSENGER = 150#

MOBILITY AID PASSENGER = 250#

REMOVABLE FRONT PASSENGER SEAT = 100#

NOTE: THESE ARE APPROXIMATE WEIGHTS ONLY.
(ACTUAL WEIGHTS MAY VARY WITH VEHICLES)

LOADED WEIGHT CALCULATIONS

31 May 2015

$$300(3) + 300(40) + 150(79) + (250 - 100)(79) + 2569(121) - F_{\text{VF}}(121) = 0$$

$$L_{\text{F}} = 2872 \text{ 赫}$$

6
 7
 8
 9
 10

$$150(5) + (250-100)(1) + 2401 + 2569 - 2872 - F_{v0} = 0$$

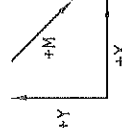
$$F_{\text{y4}} = 2998$$

REQUIRED CAPACITIES

LOADED GVW = 5870#

LOADED GAW FRONT = 2872#

LOADED GAW REAR = 2998#

[illegible]